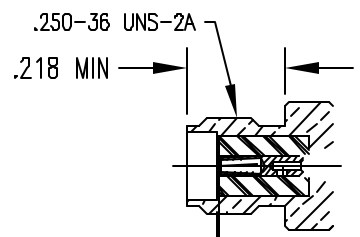


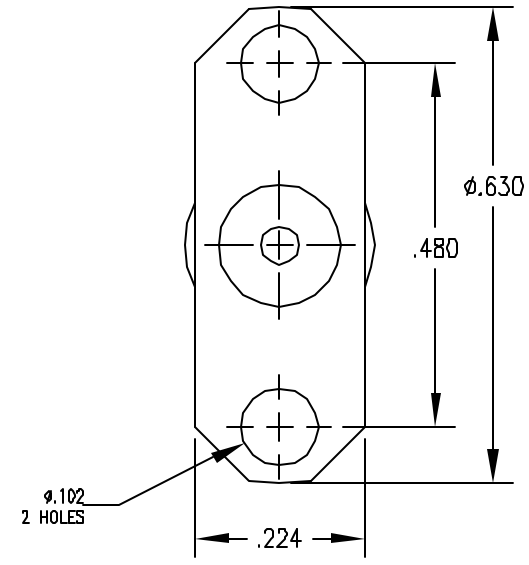
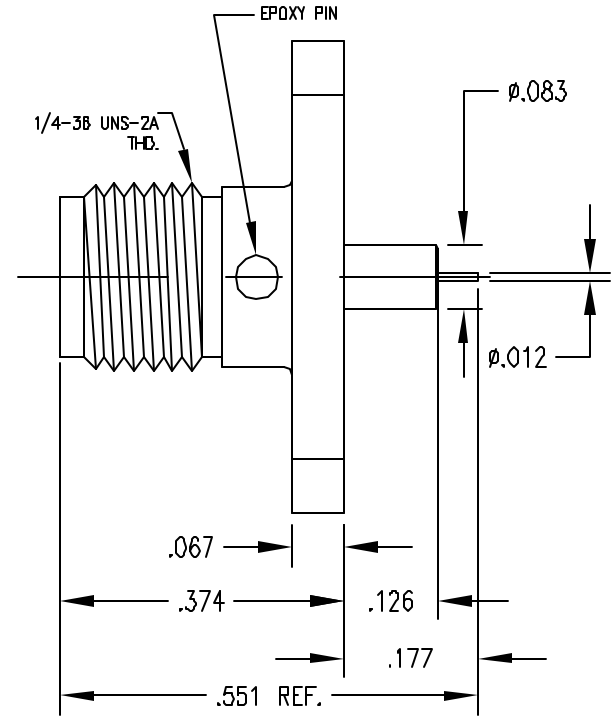
1.0 PERFORMANCE:  
 1.1 FREQUENCY RANGE DC-18 GHz  
 1.3 SYSTEM IMPEDANCE 50 OHMS  
 1.4 DWV: 1500 Vrms @ 60 Hz (SEA LEVEL)  
 1.5 VOLTAGE RATING: 500 Vrms (SEA LEVEL)  
 1.6 TEMP RANGE: -65 / +165 °C

2.0 MATERIALS  
 2.2 SOCKET CONTACT: BeCu  
 2.4 OTHER METAL PARTS: SS303  
 2.5 INSULATOR: TEFLON  
 3.0 FINISHES  
 3.1 CONTACTS: MINIMUM PLATE OF  
 .000030 GOLD OVER .000050 NICKEL OVER .000030 COPPER  
 3.2 BODY & OTHER METAL PARTS: PASSIVATE

4.0 MECHANICAL  
 4.1 INTERFACES PER MIL-STD-348  
 4.4 CONTACT RETENTION 6 LBS AXIAL  
 4.5 INSULATOR RETENTION 6 LBS AXIAL  
 4.6 DURABILITY: 100 CYCLES



.010 CONTACT:BODY &  
 .000 INSULATOR:BODY



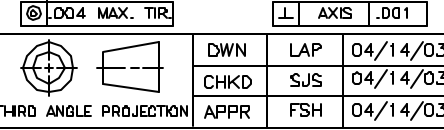
P/N: STI 1206-21-PG

DO NOT SCALE DRAWING

Rev.	Revisions	Disp.	Date	Dwn.	Appd.
A	ORIGINAL	NEW	04/14/03	RD	FSH
RECOM. STCK SIZE	FT/M PCS	Ref.: SK	REMOVE ALL BURRS AND SHARP EDGES .005 MAX.	INTERPRET PER ASME Y14.5M-1994	

THIS DRAWING CONTAINS CONFIDENTIAL INFORMATION PROPRIETARY TO SAN-TRON INC. IT MUST NOT BE REPRODUCED OR DISCLOSED TO OTHERS OR USED IN ANY OTHER WAY, IN WHOLE OR PART EXCEPT AS AUTHORIZED IN WRITING BY SAN-TRON INCORPORATED.

UNLESS OTHERWISE SPECIFIED:  
 ALL DIMENSIONS ARE IN INCHES.  
 ALL DIMENSIONS ARE AFTER PLATING.  
 .XXX = ±.005 ALL MACHINED SURFACES  $\sqrt{3}$  MAX.  
 .XX = ±.01 ANG. ±1/2° FRACTIONAL = ±1/64  
 ◎ .004 MAX. TIR



**SAN-TRON, INC.**  
 4 NEWBURY PORT TPK. IPSWICH MA USA 01938  
 TEL: 978-356-1585 FAX: 978-356-1573  
 WWW.santron.com E MAIL: santron@santron.com

TITLE SMA 2 HOLE FLANGE PANEL MOUNT RECEPTACLE FEMALE, STR., EXTENDED POST AND INS.

MATERIAL:	FINISH:
SEE NOTES	SEE NOTES
CAGE CODE: 50896	DWG NO. OL-STI 1206-21-1
SCALE 4:1	REV. A