

Features

- LO/RF: 1500-3600MHz
- IF: DC-600MHz
- LO Level: +17dBm
- Conversion Loss: 8.0dB
- RF Input: Up to +10dBm
- IP3: +25dBm
- SMA Connector

Picture



Description

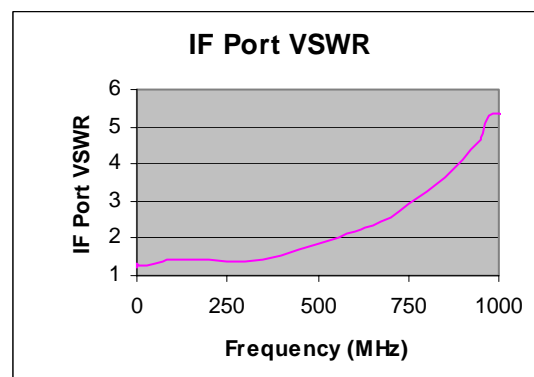
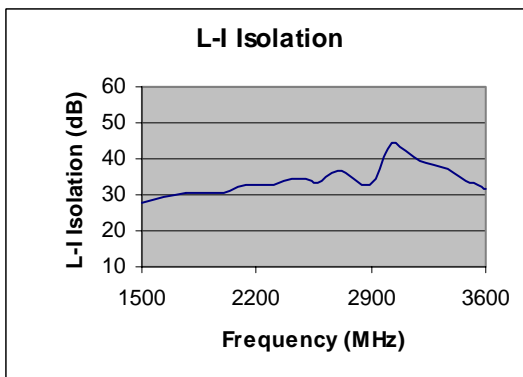
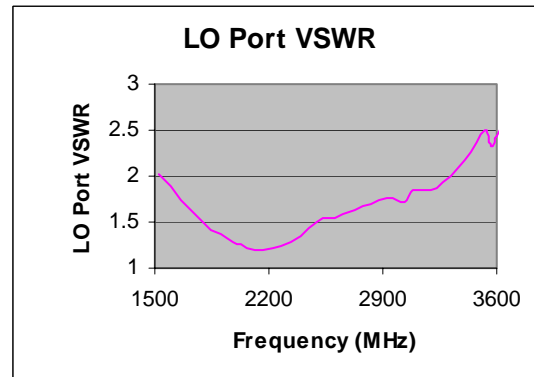
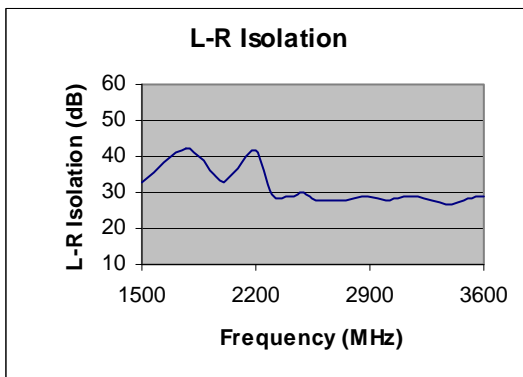
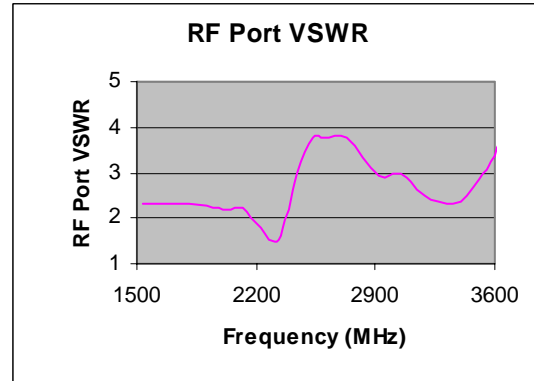
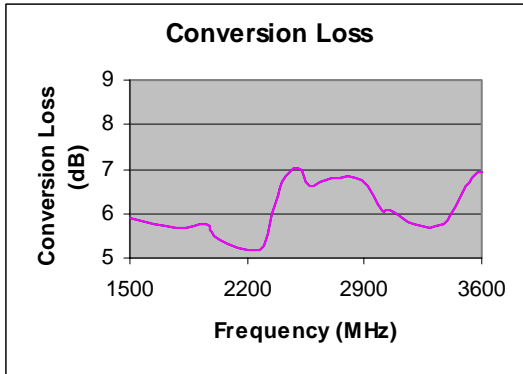
MXR-36H is a high IP3 passive double balanced mixer operates with LO drive level range of +14dBm to +20dBm.

Electrical Specifications @ +25 °C, LO= +17dBm

Parameter	Unit	Minimum	Typical	Maximum
Frequency Range				
LO/RF	MHz	1500		3600
IF	MHz	DC		600
Conversion Loss	dB		8.0	9.0
LO-RF Isolation				
1500-3600 MHz	dB	20	30	
LO-IF Isolation				
1500-3600 MHz	dB	20	34	
RF Input Power up to	dBm		+10	
IP3 (Center Band)	dBm		+25	

Typical Performance @ +25 °C

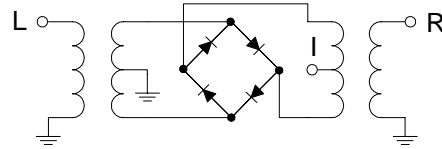
LO = +17dBm



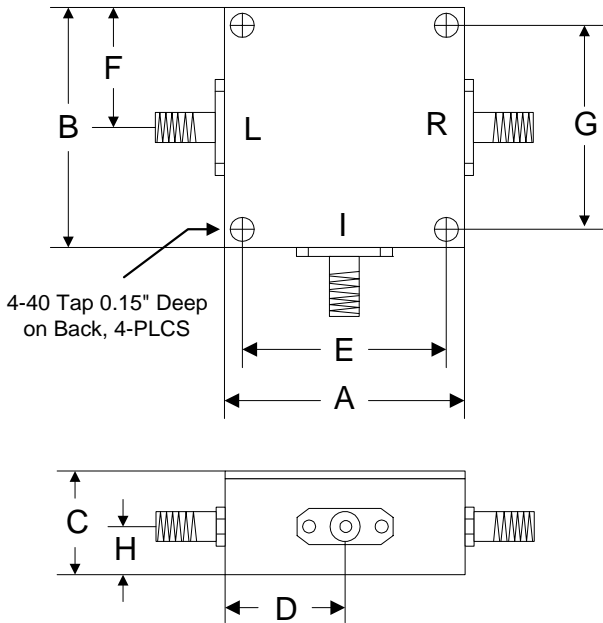
Absolute Maximum Ratings

Parameter	Absolute Maximum
RF Power	+23dBm
Peak IF Current	40mA
Operating Temperature	-40 °C to +85 °C
Storage Temperature	-55 °C to +100 °C

Schematic



Outline



	A	B	C	D	E	F	G	H
Inch	1.250	1.250	0.563	0.625	1.000	0.625	1.000	0.250
mm	31.75	31.75	14.29	15.88	25.40	15.88	25.40	6.35