

### Features

- LO/RF: 80-2500MHz
- IF: 1-1000MHz
- LO Level: +17dBm
- Conversion Loss: 8.0dB
- RF Input: Up to +14dBm
- IP3: +30dBm
- SMA Connector

### Picture



### Description

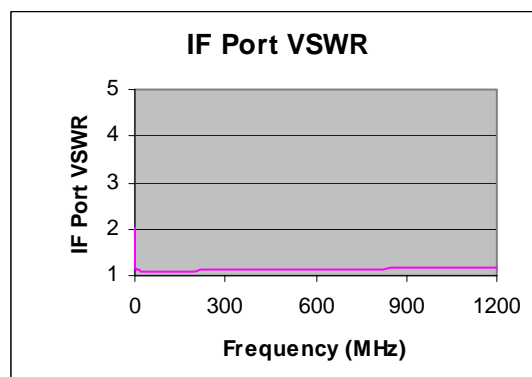
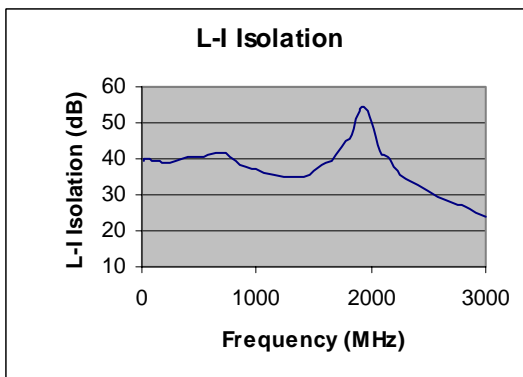
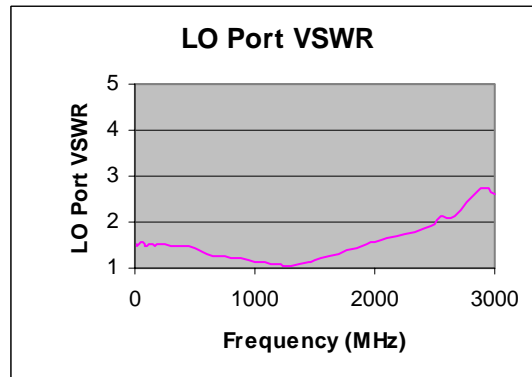
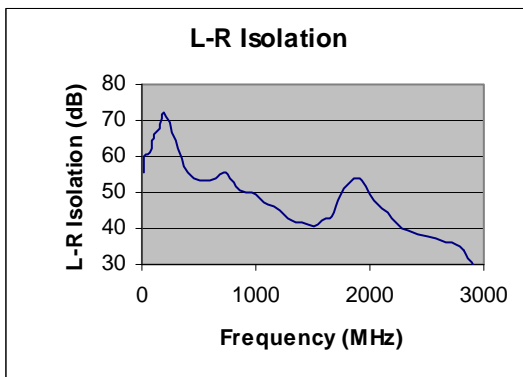
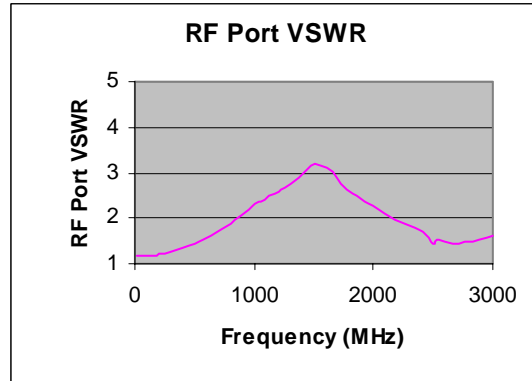
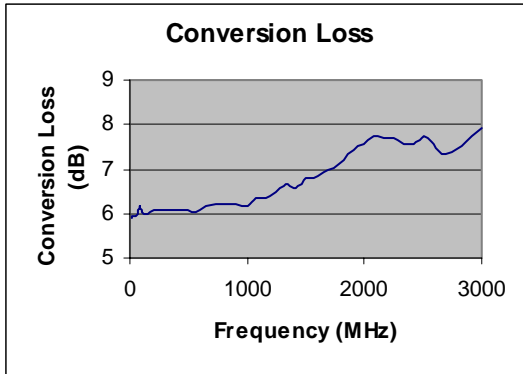
MXR-25H is a high IP3 passive double balanced mixer operates with LO drive level range of +14dBm to +20dBm.

### Electrical Specifications @ +25 °C, LO= +17dBm

Parameter	Unit	Minimum	Typical	Maximum
Frequency Range				
LO/RF	MHz	80		2500
IF	MHz	1		1000
Conversion Loss	dB		8.0	8.6
LO-RF Isolation				
80-800 MHz	dB	29	46	
800-1250 MHz	dB	25	37	
1250-2500 MHz	dB	20	35	
LO-IF Isolation				
80-800 MHz	dB	26	38	
800-1250 MHz	dB	24	33	
1250-2500 MHz	dB	20	36	
RF Input Power up to	dBm		+14	
IP3 (Center Band)	dBm		+30	

### Typical Performance @ +25 °C

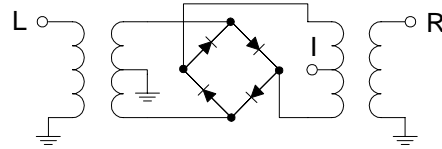
LO = +17dBm



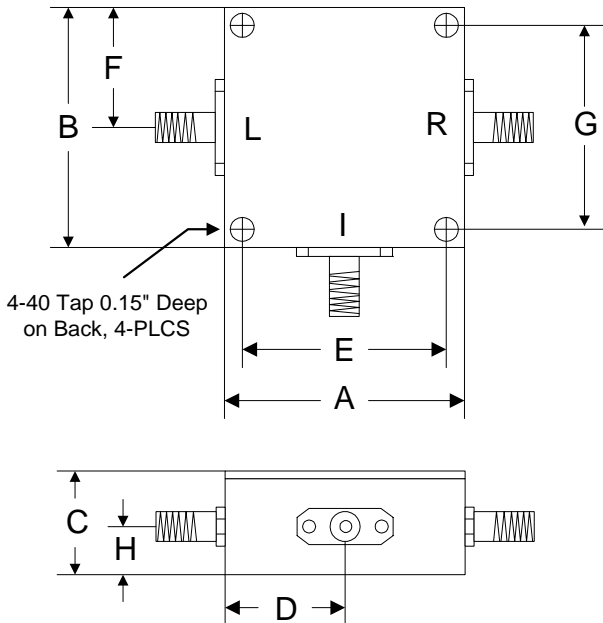
### Absolute Maximum Ratings

Parameter	Absolute Maximum
RF Power	+23dBm
Peak IF Current	40mA
Operating Temperature	-40 °C to +85 °C
Storage Temperature	-55 °C to +100 °C

### Schematic



### Outline



	A	B	C	D	E	F	G	H
Inch	1.250	1.250	0.563	0.625	1.000	0.625	1.000	0.250
mm	31.75	31.75	14.29	15.88	25.40	15.88	25.40	6.35