

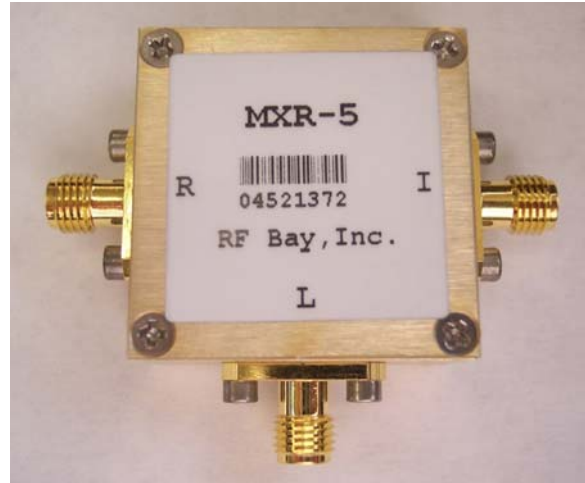
Level 10

0.5-500MHz Frequency Mixer

Features

- LO/RF: 0.5-500MHz
- IF: DC-500MHz
- LO Level: +10dBm
- Conversion Loss: 6.5dB
- RF Input: Up to +5dBm
- IP3: +15dBm
- SMA Connector

Picture



Description

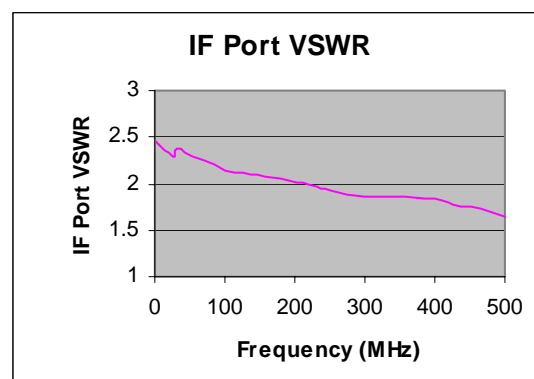
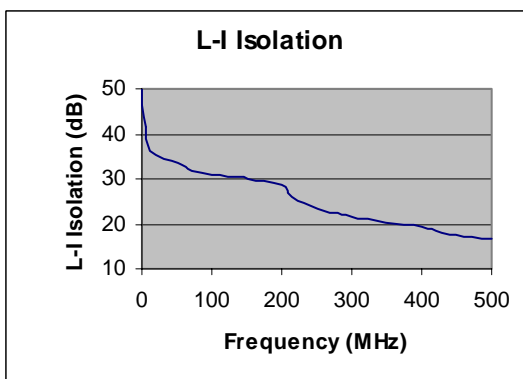
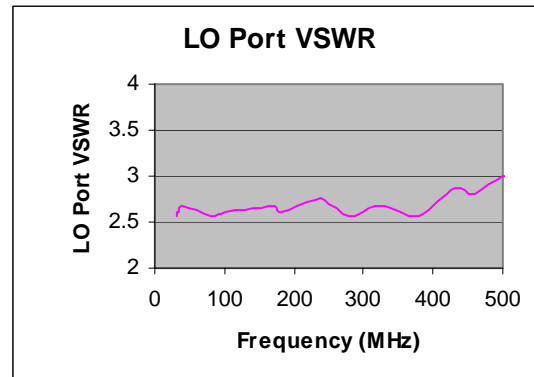
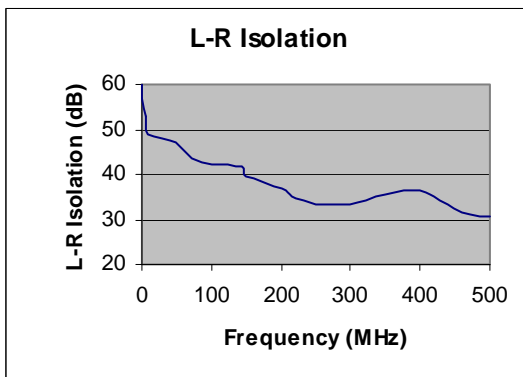
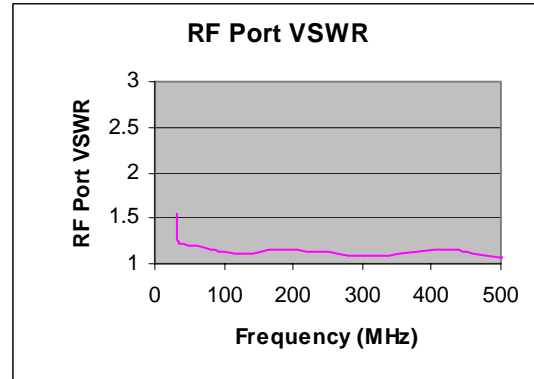
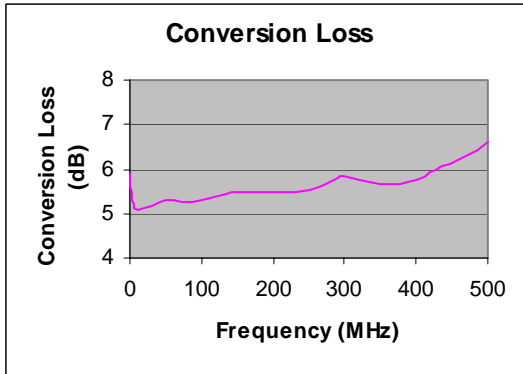
MXR-5 is a passive double balanced mixer operates with LO drive level range of +7dBm to +13dBm.

Electrical Specifications @ +25°C, LO= +10dBm

Parameter	Unit	Minimum	Typical	Maximum
Frequency Range				
LO/RF	MHz	0.5		500
IF	MHz	DC		500
Conversion Loss	dB		6.8	8.5
LO-RF Isolation				
0.5-5 MHz	dB	50	65	
5-250MHz	dB	35	55	
250-500MHz	dB	26	47	
LO-IF Isolation				
0.5-5MHz	dB	40	52	
5-250MHz	dB	22	45	
250-500MHz	dB	20	34	
RF Input Power up to	dBm		+5	
IP3 (Center Band)	dBm		+15	

Typical Performance @ +25 °C

LO = +10dBm



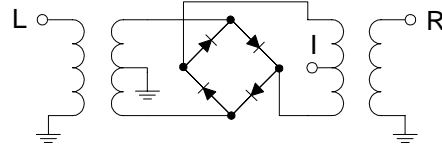
Level 10

0.5-500MHz Frequency Mixer

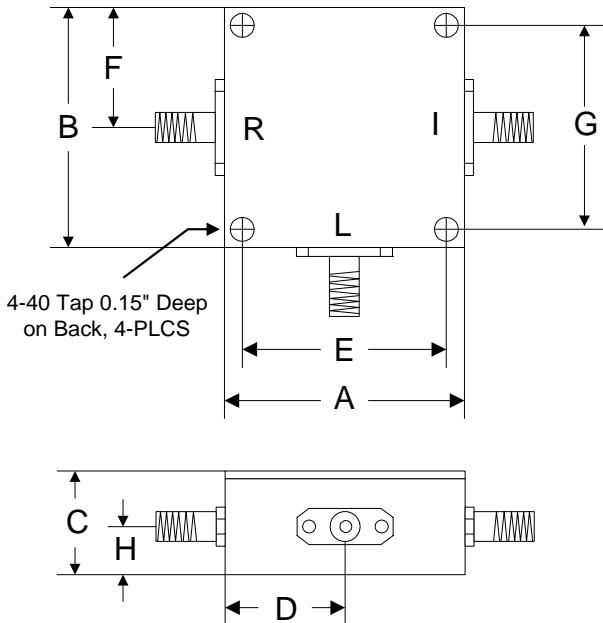
Absolute Maximum Ratings

Parameter	Absolute Maximum
RF Power	+17dBm
Peak IF Current	40mA
Operating Temperature	-40 °C to +85 °C
Storage Temperature	-55 °C to +100 °C

Schematic



Outline



	A	B	C	D	E	F	G	H
Inch	1.250	1.250	0.563	0.625	1.000	0.625	1.000	0.250
mm	31.75	31.75	14.29	15.88	25.40	15.88	25.40	6.35