

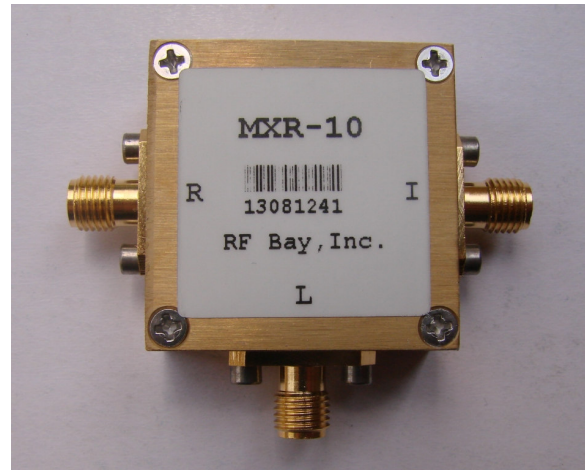
Level 7

5-1000MHz Frequency Mixer

Features

- LO/RF: 5-1000MHz
- IF: DC-1000MHz
- LO Level: +7dBm
- Conversion Loss: 7dB
- RF Input: Up to +1dBm
- Input IP3: +20dBm
- SMA Connector

Picture



Description

MXR-10 is a passive High IP3 double balanced mixer operates with LO drive level range of +3dBm to +10dBm.

Electrical Specifications @ +25 °C, LO= +7dBm

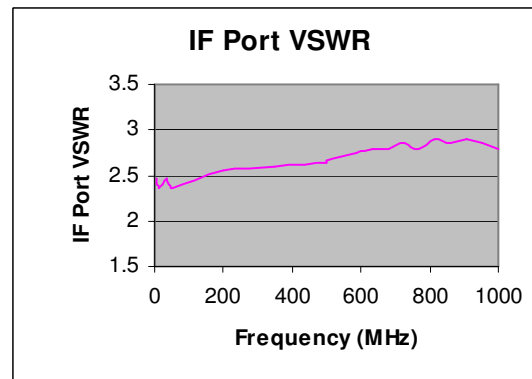
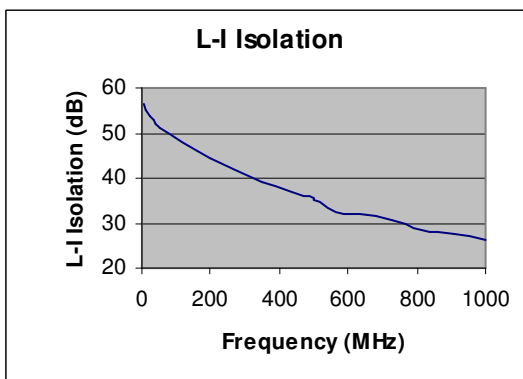
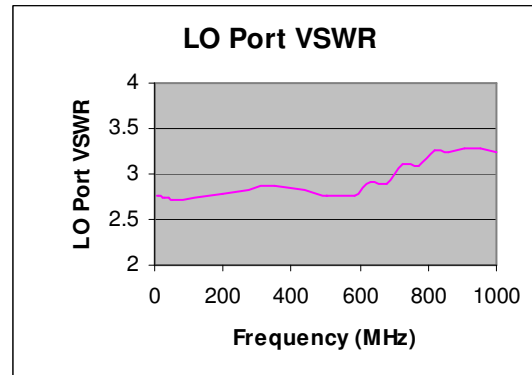
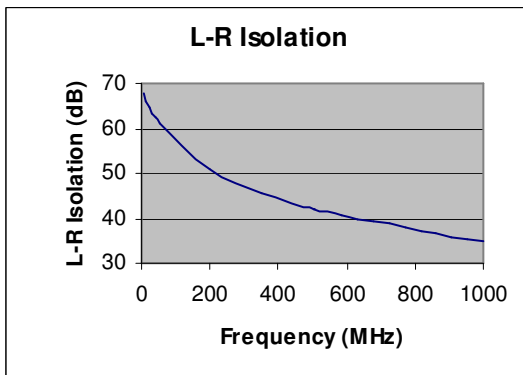
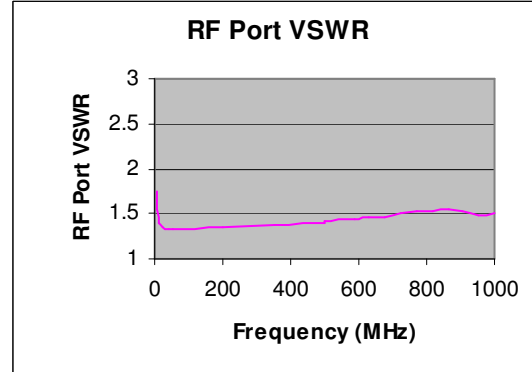
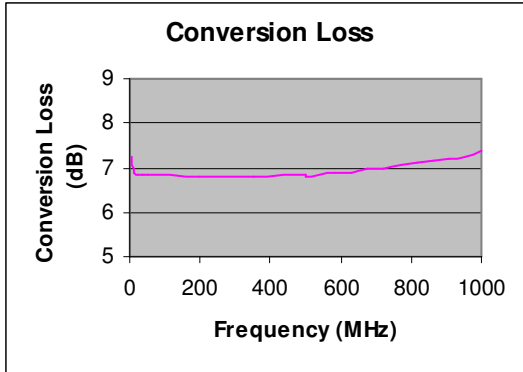
| Parameter | Unit | Minimum | Typical | Maximum |
|----------------------|------|---------|---------|---------|
| Frequency Range | | | | |
| LO/RF | MHz | 5 | | 1000 |
| IF | MHz | DC | | 1000 |
| Conversion Loss | dB | | 7.0 | 8.0 |
| LO-RF Isolation | | | | |
| 5-50 MHz | dB | 40 | 60 | |
| 50-500MHz | dB | 25 | 47 | |
| 500-1000MHz | dB | 22 | 32 | |
| LO-IF Isolation | | | | |
| 5-50MHz | dB | 35 | 62 | |
| 50-500MHz | dB | 25 | 45 | |
| 500-1000MHz | dB | 20 | 32 | |
| RF Input Power up to | dBm | | +1 | |
| IP3 (Center Band) | dBm | | +20 | |

Level 7

5-1000MHz Frequency Mixer

Typical Performance @ +25 °C

LO = +7dBm



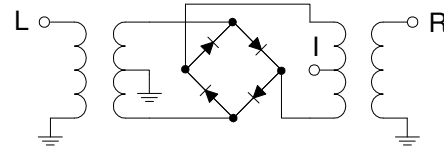
Level 7

5-1000MHz Frequency Mixer

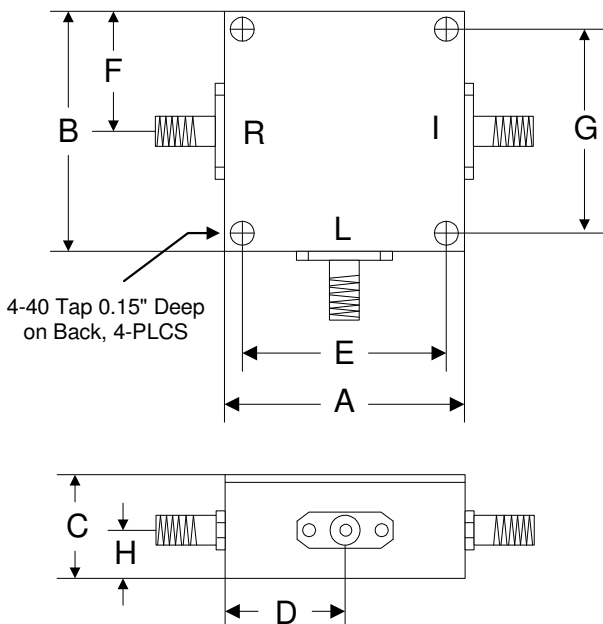
Absolute Maximum Ratings

| Parameter | Absolute Maximum |
|-----------------------|-------------------|
| RF Power | +17dBm |
| Peak IF Current | 40mA |
| Operating Temperature | -40 °C to +85 °C |
| Storage Temperature | -55 °C to +100 °C |

Schematic



Outline



| | A | B | C | D | E | F | G | H |
|------|-------|-------|-------|-------|-------|-------|-------|-------|
| Inch | 1.250 | 1.250 | 0.563 | 0.625 | 1.000 | 0.625 | 1.000 | 0.250 |
| mm | 31.75 | 31.75 | 14.29 | 15.88 | 25.40 | 15.88 | 25.40 | 6.35 |