

## Level 4

## 10-1000MHz Frequency Mixer

### Features

- LO/RF: 10-1000MHz
- IF: DC-800MHz
- LO Level: +4dBm
- Conversion Loss: 7.2dB
- RF Input: Up to +1dBm
- Input IP3: +16dBm
- SMA Connector

### Picture



### Description

MXR-10L is a passive High IP3 double balanced mixer operates with LO drive level range of +1dBm to +7dBm.

### Electrical Specifications @ +25 °C, LO= +4dBm

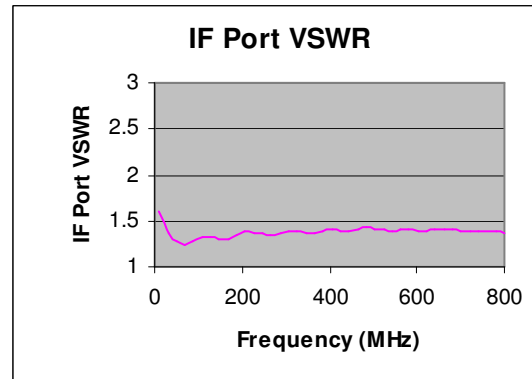
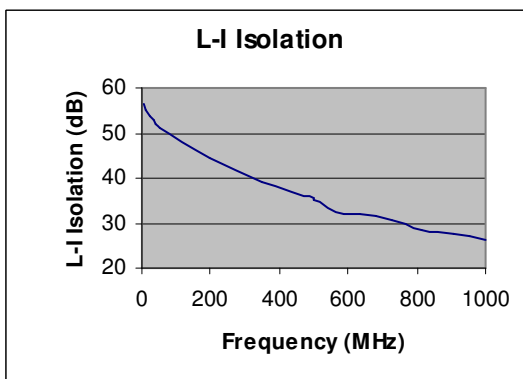
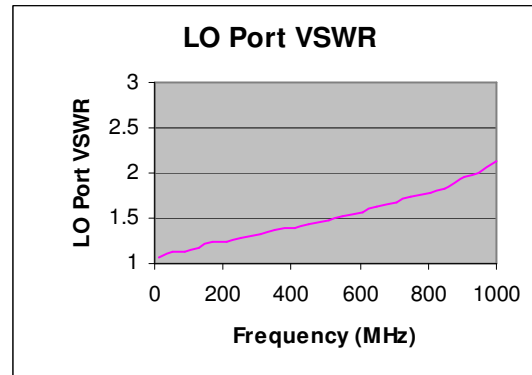
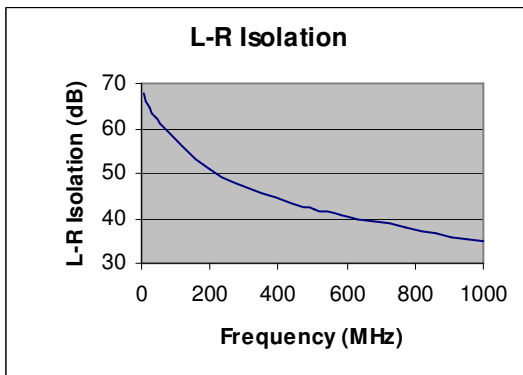
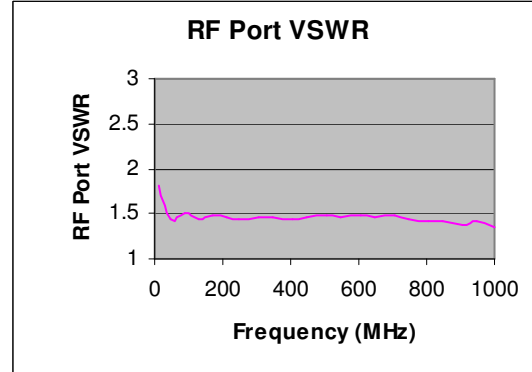
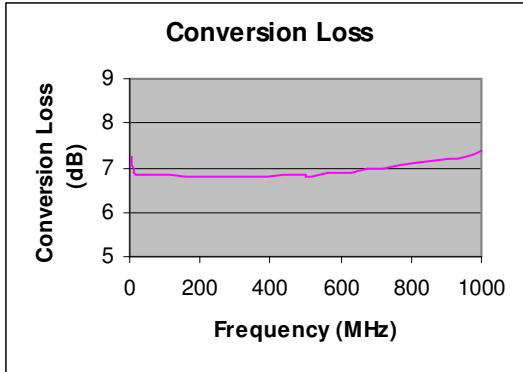
Parameter	Unit	Minimum	Typical	Maximum
Frequency Range				
LO/RF	MHz	10		1000
IF	MHz	DC		800
Conversion Loss	dB		7.2	8.2
LO-RF Isolation				
5-50 MHz	dB	55	75	
50-500MHz	dB	40	60	
500-1000MHz	dB	37	47	
LO-IF Isolation				
5-50MHz	dB	26	40	
50-500MHz	dB	20	33	
500-1000MHz	dB	13	24	
RF Input Power up to	dBm		+1	
IIP3 (Center Band)	dBm		+16	

## Level 4

## 10-1000MHz Frequency Mixer

### Typical Performance @ +25 °C

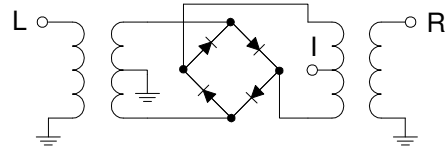
LO = +4dBm



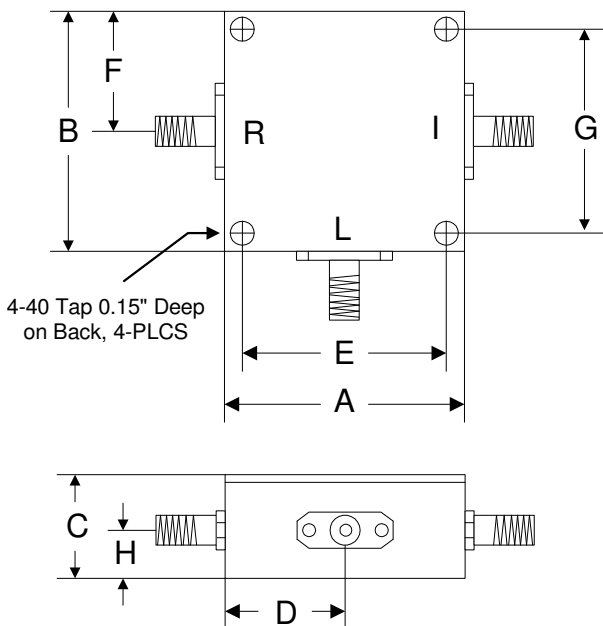
### Absolute Maximum Ratings

Parameter	Absolute Maximum
RF Power	+17dBm
Peak IF Current	40mA
Operating Temperature	-40 °C to +85 °C
Storage Temperature	-55 °C to +100 °C

### Schematic



### Outline



	A	B	C	D	E	F	G	H
Inch	1.250	1.250	0.563	0.625	1.000	0.625	1.000	0.250
mm	31.75	31.75	14.29	15.88	25.40	15.88	25.40	6.35