

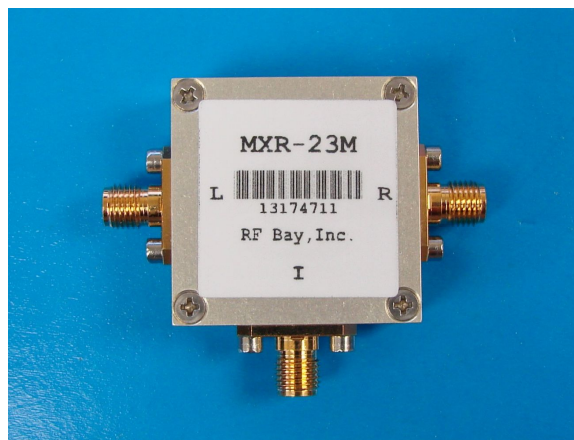
Level 13

2050-2350MHz Frequency Mixer

Features

- LO/RF: 2050-2350MHz
- IF: DC-300MHz
- LO Level: +13dBm
- Conversion Loss: 7.2dB
- RF Input: Up to +12dBm
- Input IP3: +26dBm
- SMA Connector

Picture



Description

MXR-23M is a high IP3 passive double balanced mixer operates with LO drive level range of +10dBm to +16dBm.

Electrical Specifications @ +25 °C, LO= +13dBm, IF=100MHz, 50 Ω

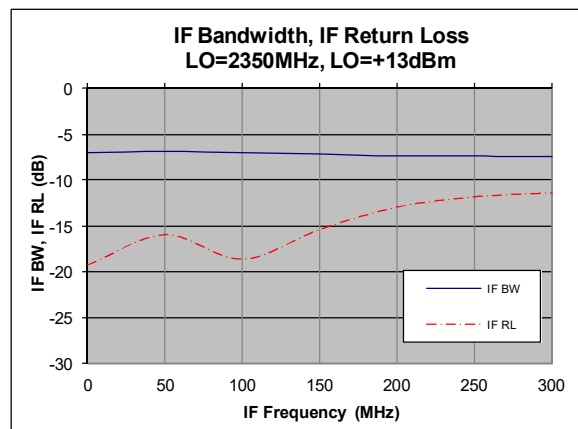
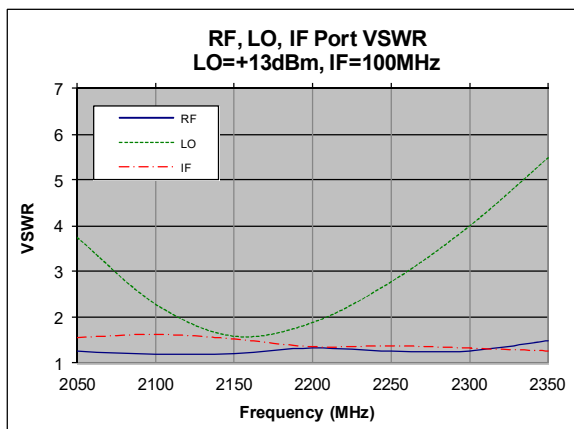
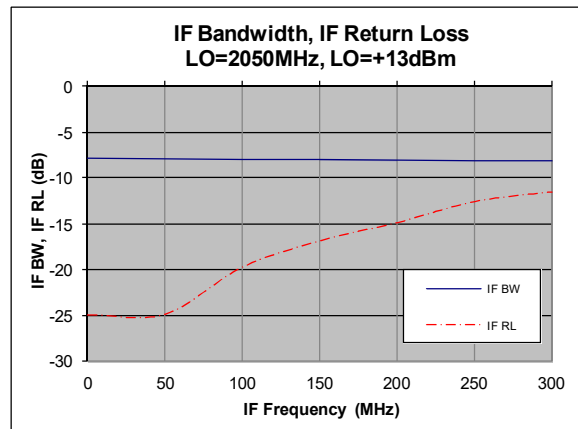
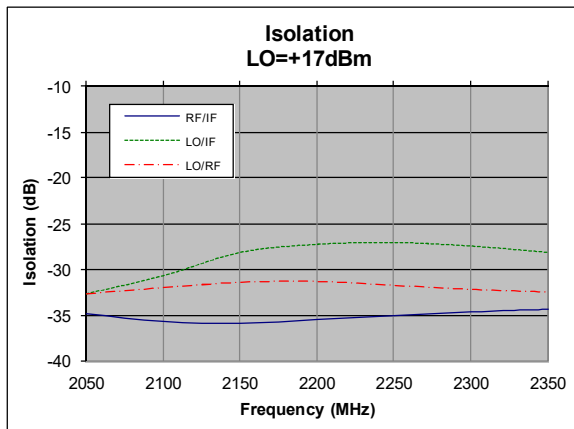
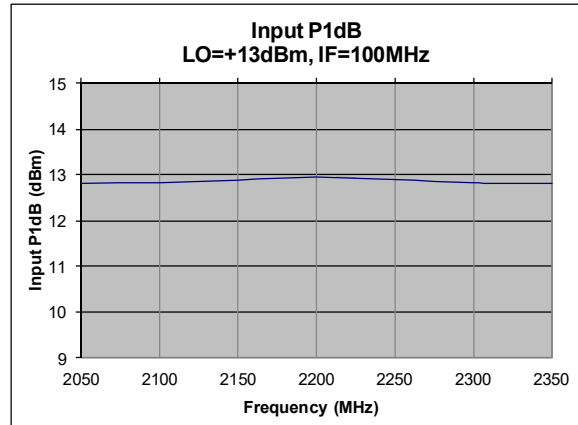
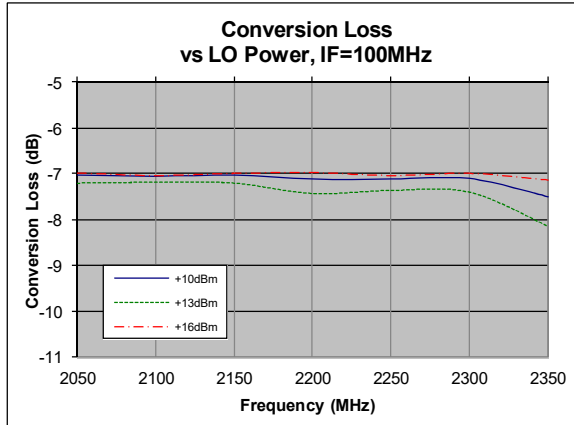
Parameter	Unit	Minimum	Typical	Maximum
Frequency Range				
LO/RF	MHz	2050		2350
IF	MHz	DC		300
Conversion Loss	dB		7.2	8.0
LO-RF Isolation	dB	25	30	
LO-IF Isolation	dB	22	27	
RF-IF Isolation	dB	30	35	
RF Input Power P _{1dB}	dBm		+12	
IP3 (Center Band)	dBm		+26	

Unless otherwise noted, all measurements performed as a downconverter.

Level 13

2050-2350MHz Frequency Mixer

Typical Performance @ +25 °C



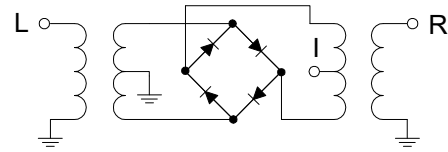
Level 13

2050-2350MHz Frequency Mixer

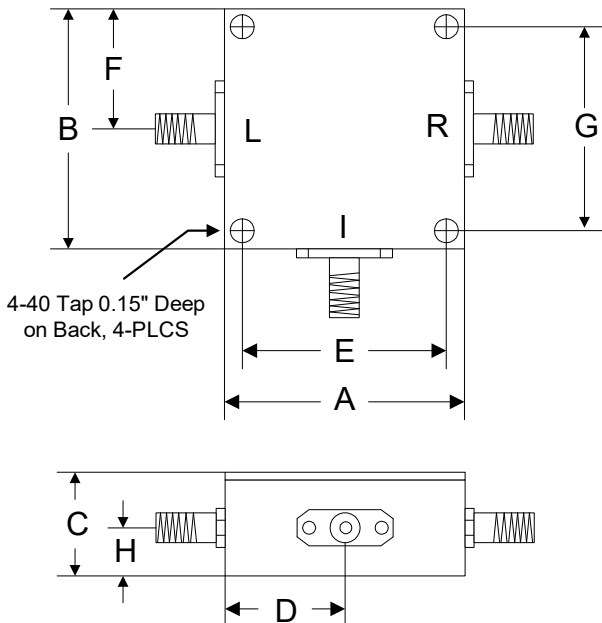
Absolute Maximum Ratings

Parameter	Absolute Maximum
RF/IF Power	+23dBm
LO Power	+23dBm
Peak IF Current	40mA
Operating Temperature	-40 °C to +85 °C
Storage Temperature	-55 °C to +100 °C

Schematic



Outline



	A	B	C	D	E	F	G	H
Inch	1.250	1.250	0.563	0.625	1.000	0.625	1.000	0.250
mm	31.75	31.75	14.29	15.88	25.40	15.88	25.40	6.35