

## Level 17

## 10-1500MHz Frequency Mixer

### Features

- LO/RF: 10-1500MHz
- IF: DC-1500MHz
- LO Level: +17dBm
- Conversion Loss: 7.0dB
- RF Input: Up to +13dBm
- Input IP3: +26dBm
- SMA Connector

### Picture



### Description

MXR-15H is a high IP3 passive double balanced mixer operates with LO drive level range of +14dBm to +20dBm.

### Electrical Specifications @ +25 °C, LO= +17dBm, 50 Ω

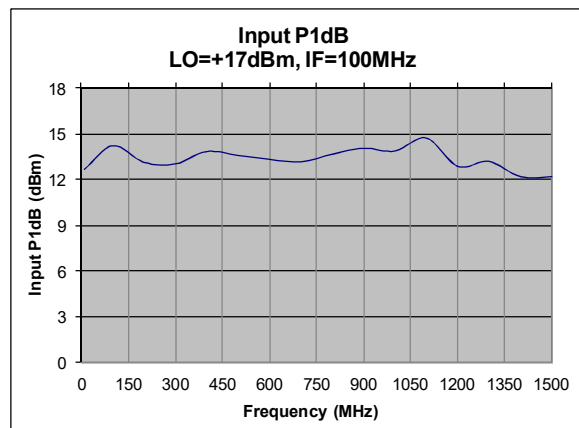
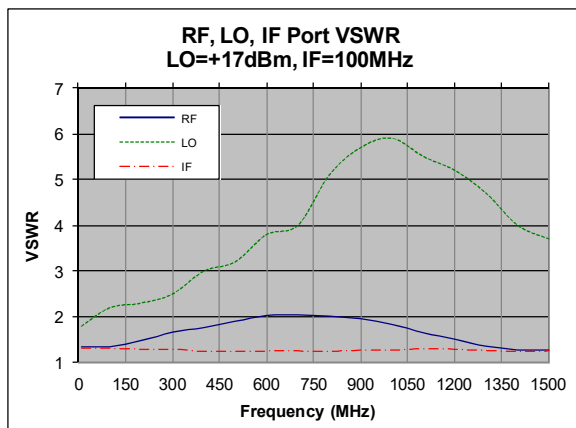
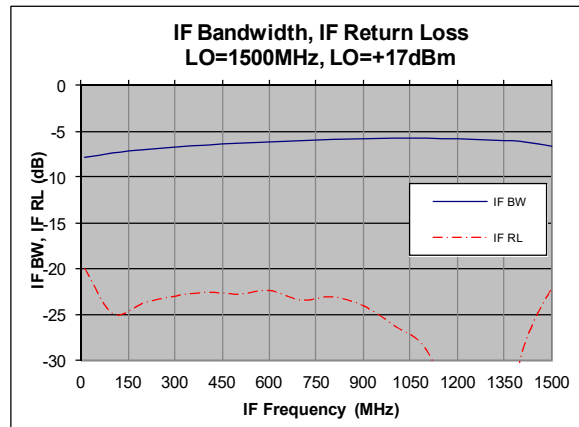
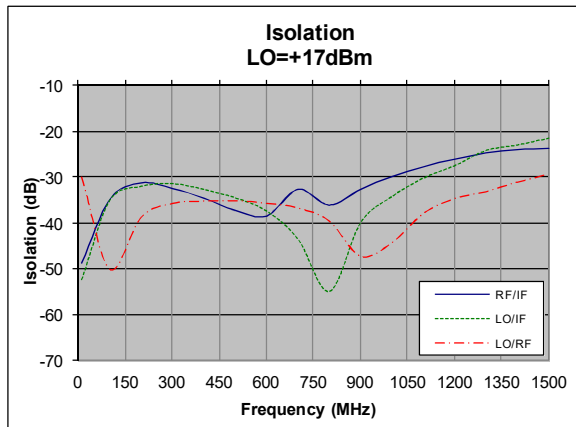
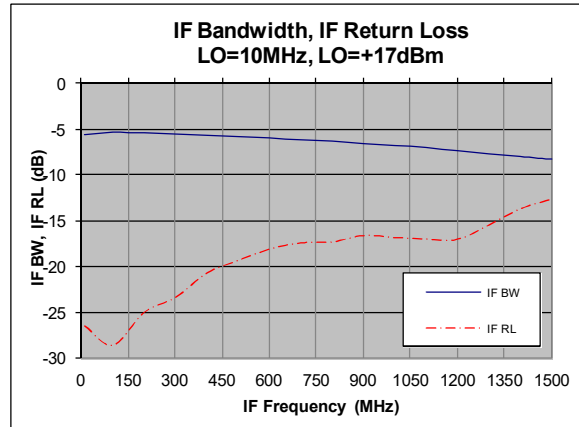
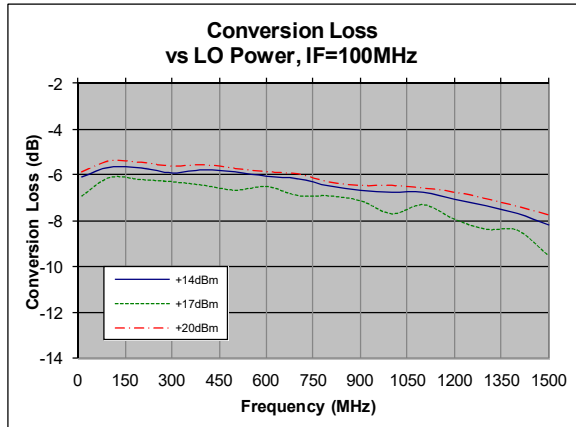
Parameter	Unit	Minimum	Typical	Maximum
Frequency Range				
LO/RF	MHz	10		1500
IF	MHz	DC		1500
Conversion Loss	dB		7.0	8.5
LO-RF Isolation				
10-500 MHz	dB	29	35	
500-1500 MHz	dB	29	35	
LO-IF Isolation				
10-500 MHz	dB	30	35	
500-1500 MHz	dB	20	30	
RF-IF Isolation				
10-500 MHz	dB	30	35	
500-1500 MHz	dB	20	30	
RF Input Power P <sub>1dB</sub>	dBm		+13	
IP3 (Center Band)	dBm		+26	

Unless otherwise noted, all measurements performed as a downconverter.

## Level 17

## 10-1500MHz Frequency Mixer

### Typical Performance @ +25 °C



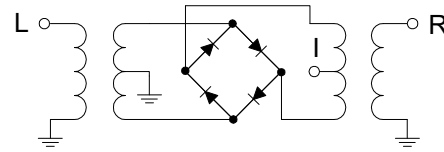
## Level 17

## 10-1500MHz Frequency Mixer

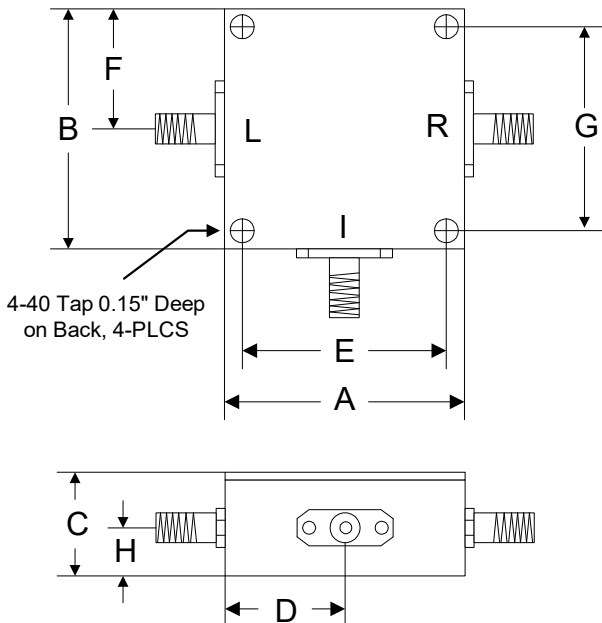
### Absolute Maximum Ratings

Parameter	Absolute Maximum
RF/IF Power	+23dBm
LO Power	+23dBm
Peak IF Current	40mA
Operating Temperature	-40 °C to +85 °C
Storage Temperature	-55 °C to +100 °C

### Schematic



### Outline



	A	B	C	D	E	F	G	H
Inch	1.250	1.250	0.563	0.625	1.000	0.625	1.000	0.250
mm	31.75	31.75	14.29	15.88	25.40	15.88	25.40	6.35