

MPA Series

2400-2500MHz 2W Medium Output Power RF Amplifier

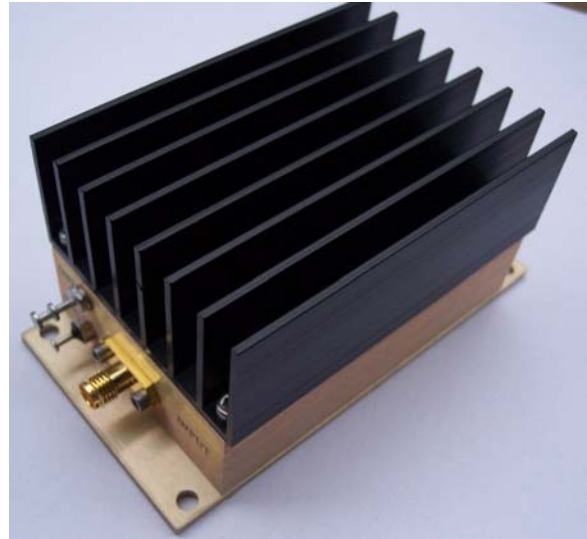
Features

- Frequency Range: 2400-2500MHz
- Gain: 28dB
- P_{1dB}: +33dBm
- IP3: +42dBm
- Noise Figure: 6dB
- DC Power: 12V
- SMA Connector

Description

MPA-24-20 is a 28dB gain +33dBm output Medium Power RF Amplifier with single 11-15V DC power supply for ISM application and wireless video transmission system or Lab use.

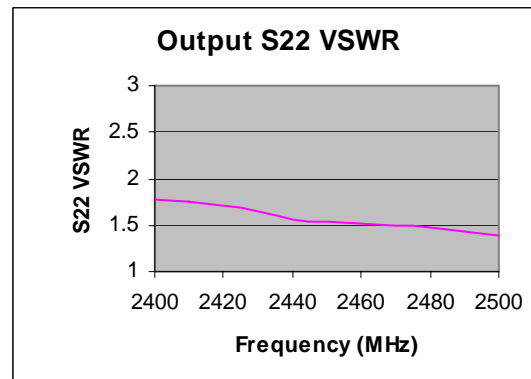
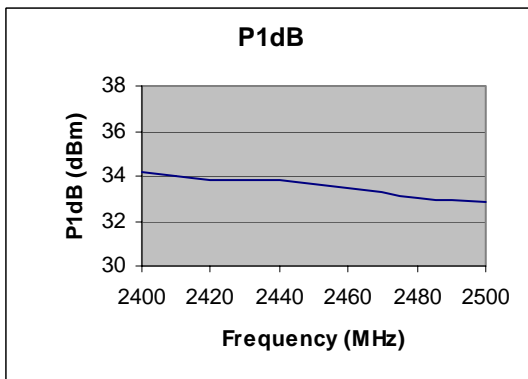
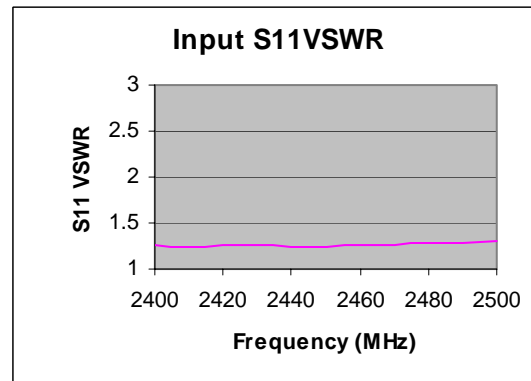
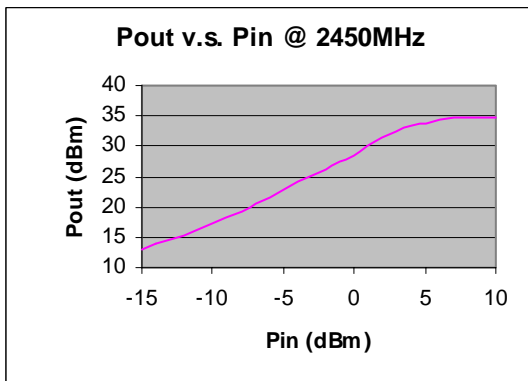
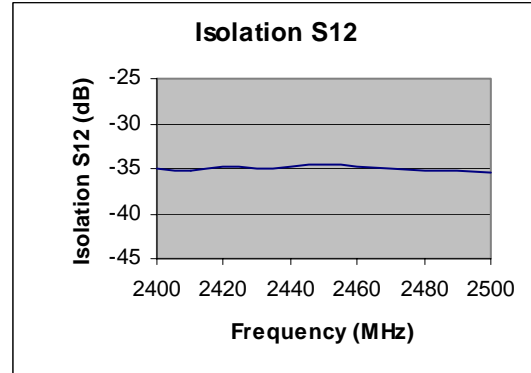
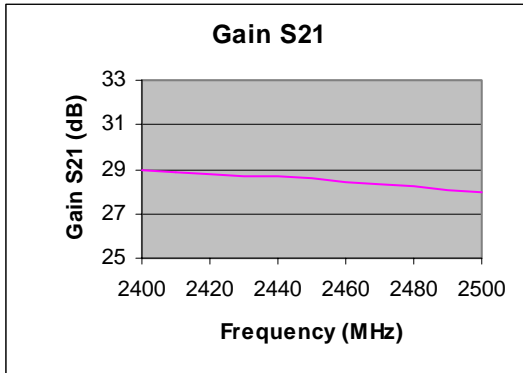
Picture



Electrical Specifications @ +25 °C, Z_s = Z_L = 50 Ohms

Parameter	Unit	Minimum	Typical	Maximum
Frequency Range	MHz	2400		2500
Large Signal Gain	dB	27	28	
P _{1dB}	dBm		+33	
P _{SAT}	dBm		+34.5	
IP3	dBm		+42	
Reverse Isolation S ₁₂	dB		-23	
Noise Figure f = 2450MHz	dB		6	
VSWR Input VSWR			1:1.2	
Output VSWR			1:2.0	
DC Power Supply	V	11	12	15
Supply Current	mA		800	

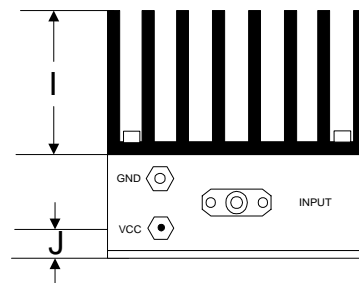
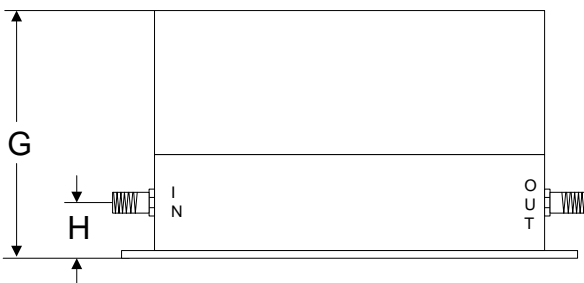
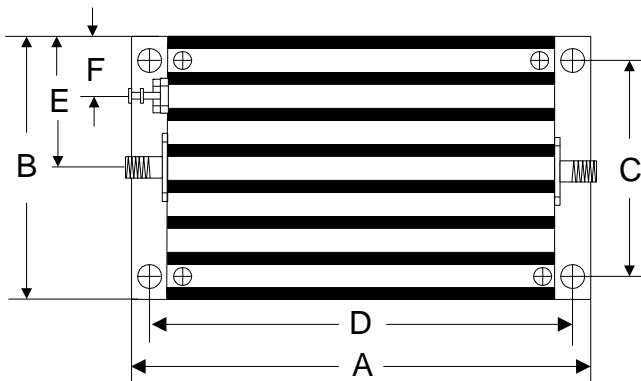
Typical Performance @ +25 °C



Absolute Maximum Ratings

Parameter	Absolute Maximum
RF Input Power	+13dBm
Supply Voltage	+17V
Operating Temperature	-40 °C to +70 °C
Storage Temperature	-55 °C to +100 °C

Outline



	A	B	C	D	E	F	G	H	I	J
Inch	3.750	2.000	1.750	3.400	1.000	0.400	1.813	0.375	1.000	0.238
mm	92.25	50.80	44.45	86.36	25.40	10.16	46.05	9.53	25.40	6.03