

MPA Series

2400-2500MHz 800mW Medium Output Power RF Amplifier

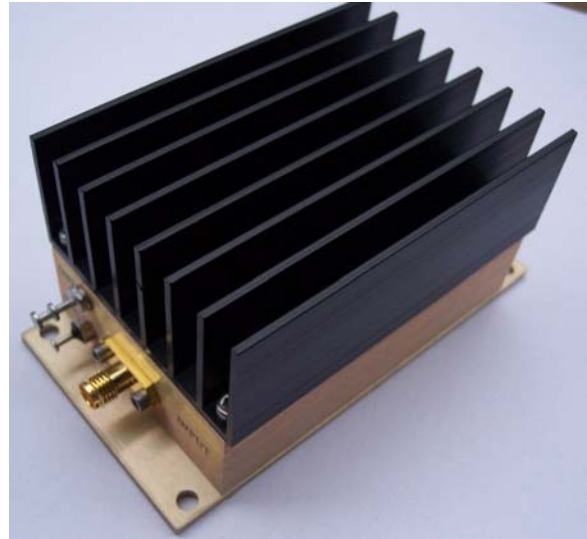
Features

- Frequency Range: 2400-2500MHz
- Gain: 23dB
- P_{1dB}: +29dBm
- IP3: +38dBm
- Noise Figure: 5dB
- DC Power: 12V
- SMA Connector

Description

MPA-24-10 is a 23dB gain +29dBm output Medium Power RF Amplifier with single 11-15V DC power supply for ISM application and wireless video transmission system or Lab use.

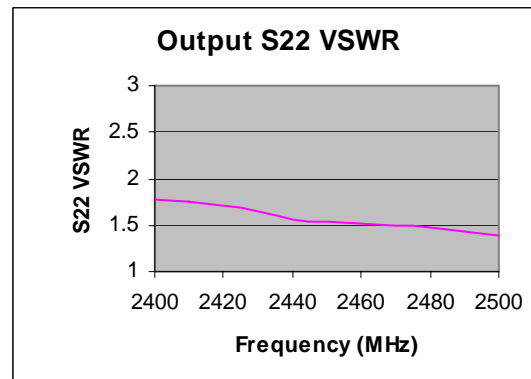
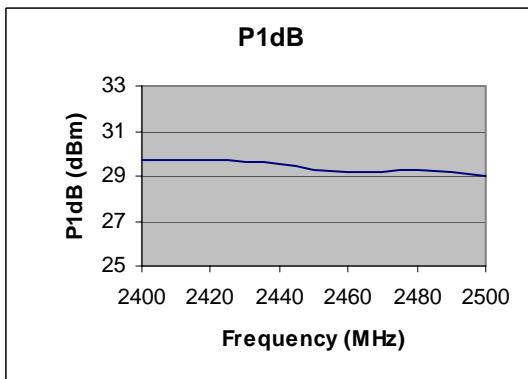
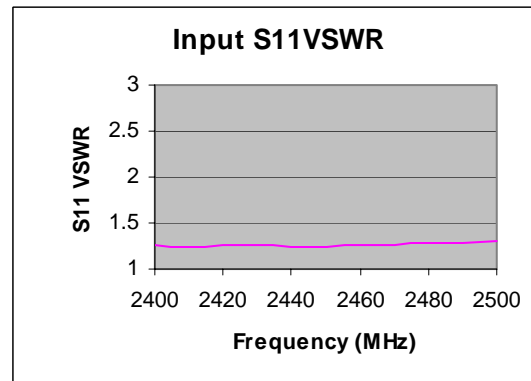
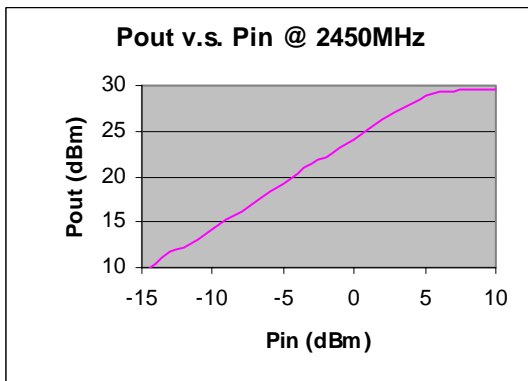
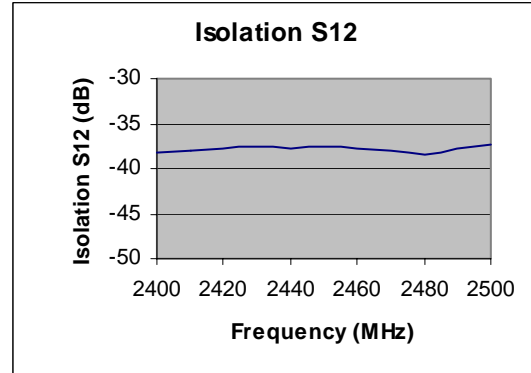
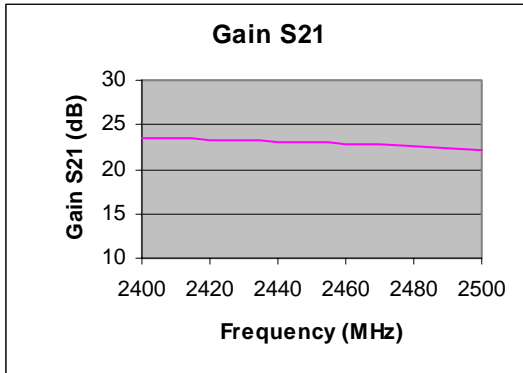
Picture



Electrical Specifications @ +25 °C, Z_s = Z_L = 50 Ohms

Parameter	Unit	Minimum	Typical	Maximum
Frequency Range	MHz	2400		2500
Gain	dB	22	23	
P _{1dB}	dBm		+29	
IP3	dBm		+38	
Reverse Isolation S ₁₂	dB		-35	
Noise Figure f = 2450MHz	dB		5	
VSWR Input VSWR			1:1.5	
Output VSWR			1:1.8	
DC Power Supply	V	11	12	15
Supply Current	mA		450	

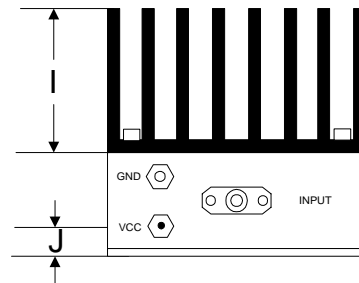
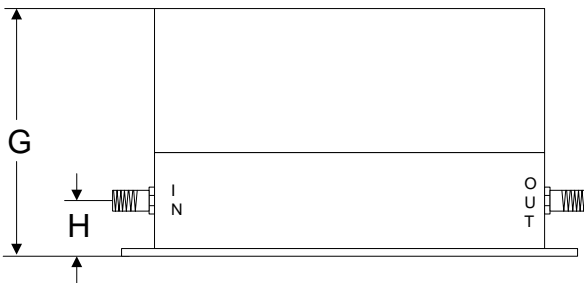
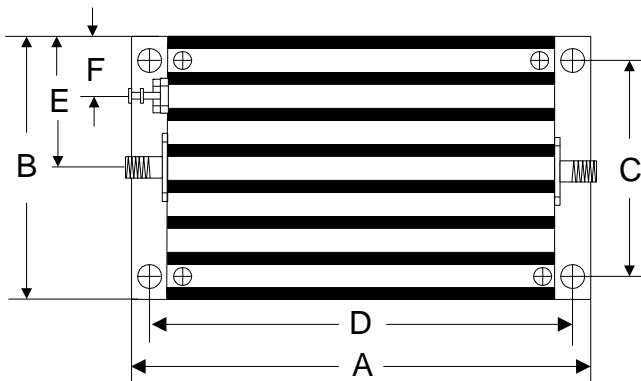
Typical Performance @ +25 °C



Absolute Maximum Ratings

Parameter	Absolute Maximum
RF Input Power	+15dBm
Supply Voltage	+17V
Operating Temperature	-40 °C to +70 °C
Storage Temperature	-55 °C to +100 °C

Outline



	A	B	C	D	E	F	G	H	I	J
Inch	3.750	2.000	1.750	3.400	1.000	0.400	1.813	0.375	1.000	0.238
mm	92.25	50.80	44.45	86.36	25.40	10.16	46.05	9.53	25.40	6.03