

## MPA Series

## 30-1200MHz 1W Power RF Amplifier

### Features

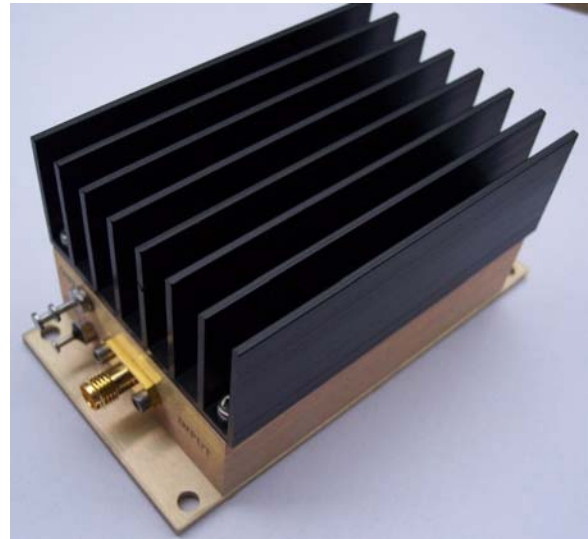
- Frequency Range: 30-1200MHz
- Gain: 30dB
- P<sub>1dB</sub>: +30dBm
- IP3: +41dBm
- Noise Figure: 4dB
- DC Power: 12V
- SMA Connector

Performance measured @ 500MHz

### Description

MPA-12-30 is a 30dB gain, +30dBm (1 Watt) output Medium Power RF Amplifier, operating frequency range from 30 - 1200MHz with single 12V DC power supply, usable to 1500MHz.

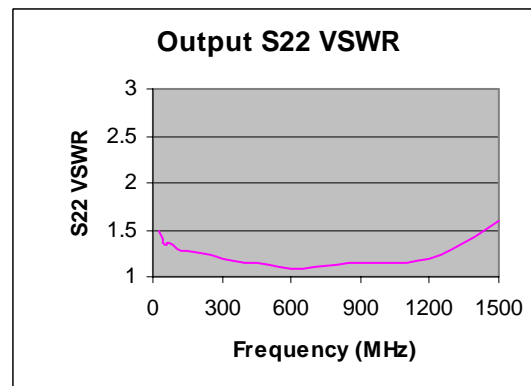
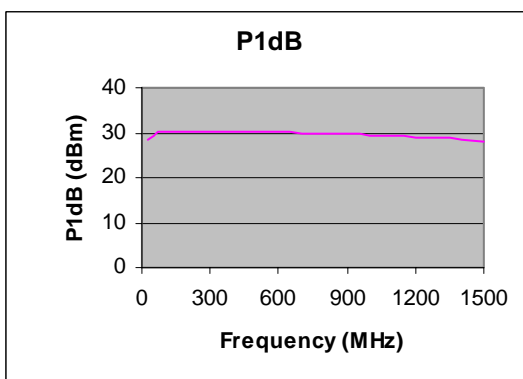
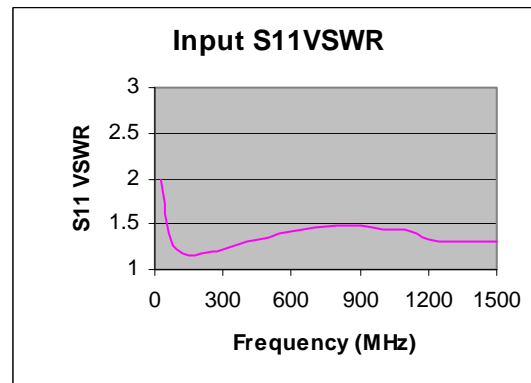
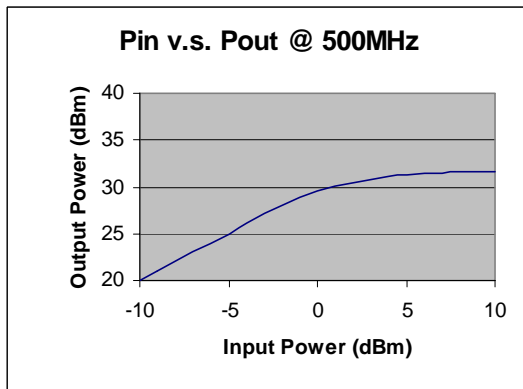
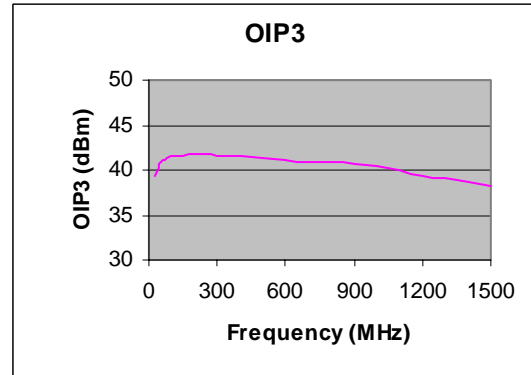
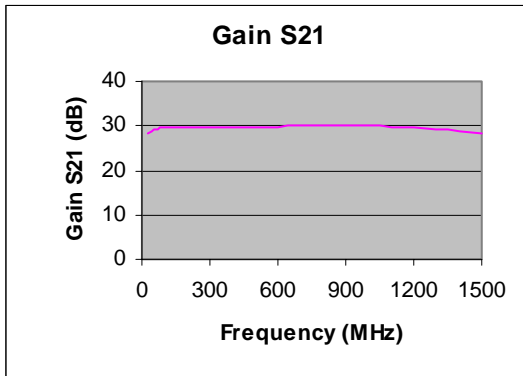
### Picture



### Electrical Specifications @ +25 °C, Z<sub>S</sub> = Z<sub>L</sub> = 50 Ohms

Parameter	Unit	Minimum	Typical	Maximum
Frequency Range	MHz	30		1200
Gain S <sub>21</sub> f = 30MHz	dB		28.5	
f = 500MHz	dB		30	
f = 900MHz	dB		30	
f = 1200MHz	dB		29	
P <sub>1dB</sub>	dBm		+30	
IP3	dBm		+41	
Reverse Isolation S <sub>12</sub>	dB		-52	
Noise Figure	dB		4	
VSWR Input VSWR S <sub>11</sub>			1:1.4	
Output VSWR S <sub>22</sub>			1:1.2	
DC Power Supply	V	11	12	13
Supply Current	mA		360	

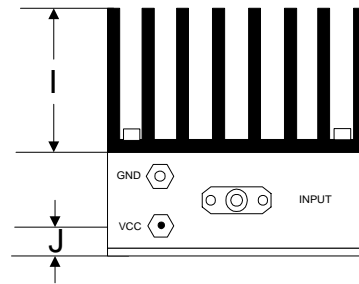
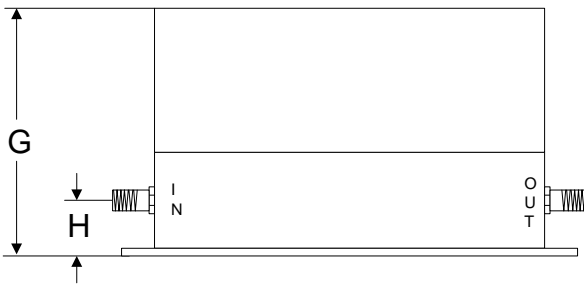
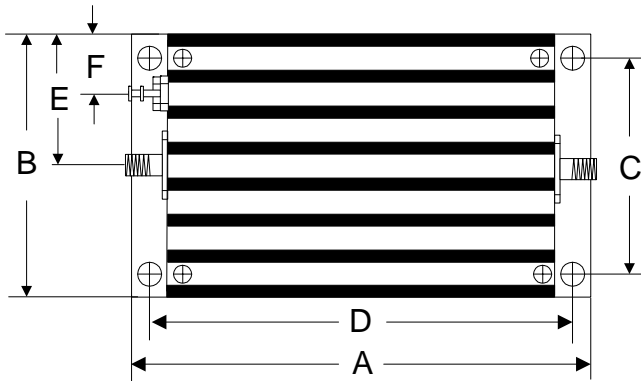
### Typical Performance @ +25 °C



### Absolute Maximum Ratings

Parameter	Absolute Maximum
RF Input Power	+17dBm
Supply Voltage	+13V
Operating Temperature	-40 °C to +70 °C
Storage Temperature	-55 °C to +100 °C

### Outline



	A	B	C	D	E	F	G	H	I	J
Inch	3.750	2.000	1.750	3.400	1.000	0.400	1.813	0.375	1.000	0.238
mm	92.25	50.80	44.45	86.36	25.40	10.16	46.05	9.53	25.40	6.03