

MPA Series

270-470MHz 4W RF Power Amplifier

Features

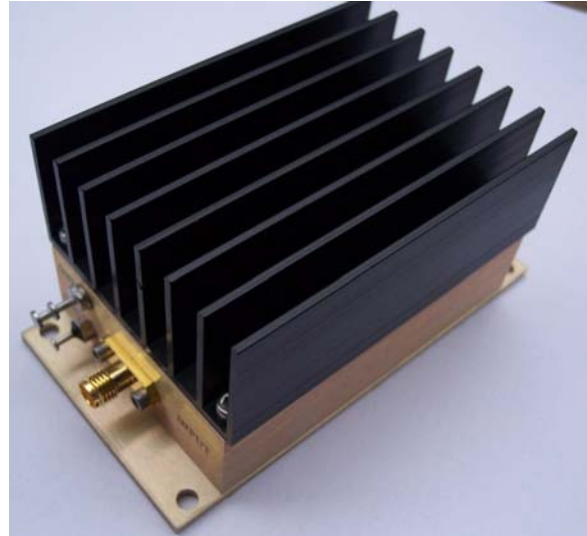
- Frequency Range: 270-470MHz
- Gain: 35dB
- P_{out}: +36dBm
- IP3: +45dBm
- Noise Figure: 6dB
- DC Power: 9V
- SMA Connector

Performance measured @ 370MHz

Description

MPA-370 is a 4Watt (+36dBm) output RF Power Amplifier operating from single 9V DC power supply with frequency from 270MHz to 470MHz.

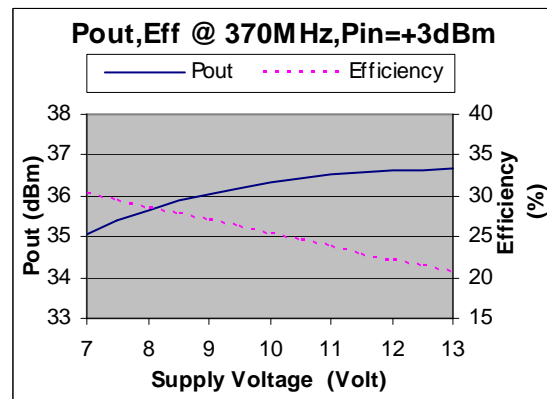
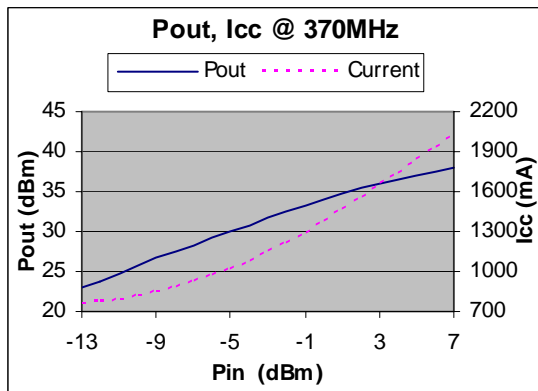
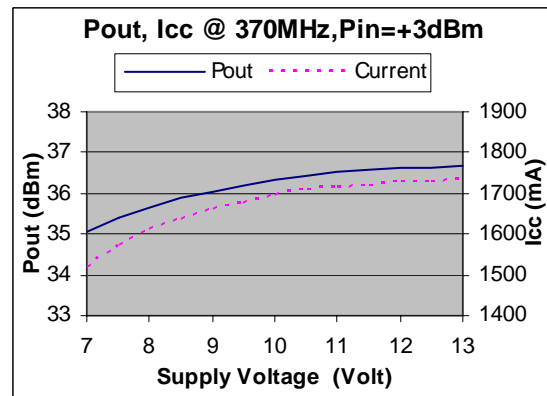
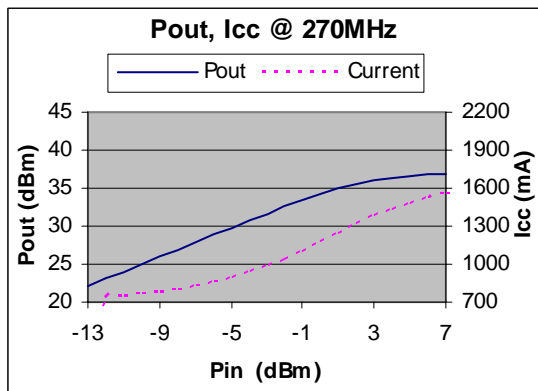
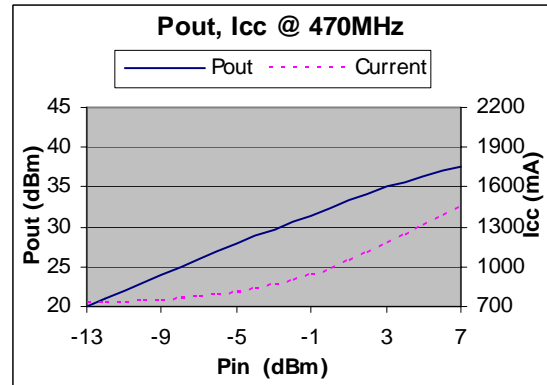
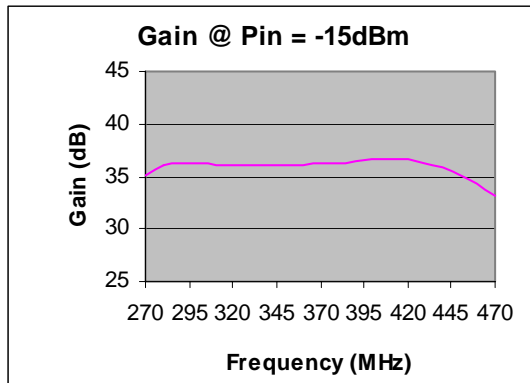
Picture



Electrical Specifications @ +25 °C, Z_S = Z_L = 50 Ω, V_{cc} = 9V

Parameter	Unit	Minimum	Typical	Maximum
Frequency Range	MHz	270		470
Small Signal Gain	dB		35	
Output Power P _{out} @ P _{in} = +3dBm	dBm		+36	
IP3	dBm		+45	
Reverse Isolation	dB		-70	
Noise Figure	dB		6.0	
Efficiency at P _{out} = +36dBm	%		25	
VSWR	Input Output		1.3:1 3.0:1	
DC Power Supply	V		9	
Supply Current	mA		1650	
Size (Excluding SMA Connector)	inch	3.750" x 2.000" x 1.813"		
Weight	Oz.	8		

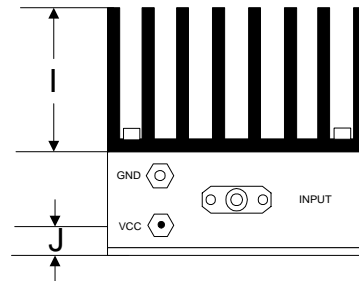
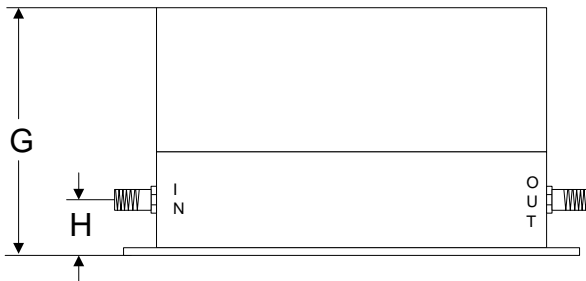
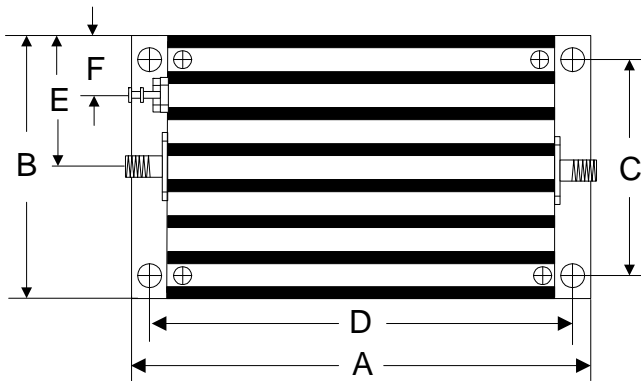
Typical Performance @ +25 °C



Absolute Maximum Ratings

Parameter	Absolute Maximum
RF Input Power	+13dBm
Supply Voltage	+15V
Operating Temperature	-30 °C to +65 °C
Storage Temperature	-55 °C to +100 °C

Outline



	A	B	C	D	E	F	G	H	I	J
Inch	3.750	2.000	1.750	3.400	1.000	0.400	1.813	0.375	1.000	0.238
mm	92.25	50.80	44.45	86.36	25.40	10.16	46.05	9.53	25.40	6.03